



SEDLESCOMBE PARISH COUNCIL



ANNUAL REPORT AND DIRECTORY 2012

ANNUAL ASSEMBLY OF THE PARISH MEETING OF SEDLESCOMBE

TO LOCAL GOVERNMENT ELECTORS OF SEDLESCOMBE

YOU ARE INVITED TO ATTEND THE ANNUAL ASSEMBLY OF THE PARISH MEETING OF SEDLESCOMBE TO BE HELD IN SEDLESCOMBE VILLAGE HALL ON TUESDAY 17 APRIL 2012 AT 7.30pm

The table displays by local organisations and businesses will be ready from 7pm and will remain after the meeting when you will be welcome to stay for tea or coffee. Please bring your questions or comments to the meeting.

AGENDA

1. Chairman's Opening Remarks
2. Minutes of the Annual Assembly of the Parish Meeting of Sedlescombe held on 26/04/11
3. Report by County Councillor Peter Jones
4. Report by District Councillor Tony Ganly
5. Sedlescombe Parish Council Report
6. Any other business.

Signed *Valerie Wight*
Chairman of Sedlescombe Parish Council



SEDLESCOMBE IMAGES FROM 2012



Front cover photo by
Cllr Roy Chapman taken from an unusual viewpoint
that most of us do not get a chance to see

I would like to start my report by welcoming Julian Heap, Roy Chapman, John Reynolds and Rod Eldridge who have joined the Council this year. Anthony Rand, who has been a dedicated and particularly useful councillor and Vice Chairman, left during the year. The building of the new sports pavilion in 2009 was probably one of the highlights of his 16 years on the Council, with Anthony acting as Project Manager before and throughout the building phase.

Sedlescombe has always had a strong base of clubs and organisations which have become Village institutions. During this year, we sadly lost three of our oldest, with the closure of the Whist Club (started 30 years ago), Child Welfare Clinic (established in 1954, nearly 60 years ago) and Sedlescombe afternoon WI (established in 1931, 80 years ago).

Talking of "institutions", the geese on Sedlescombe Village Green have become a really well known part of our Village life. We must, therefore, wholeheartedly support Sedlescombe Societies Association's decision to use some of the money raised at the 2011 Sedlescombe Fayre to bring in some young birds to swell their numbers. There are now seven geese and, thankfully, they seem to get on well together and have even featured in a Battle Observer article.

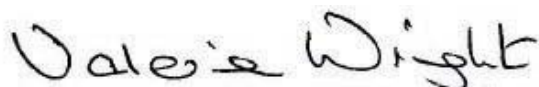
Sue Walton has been the Chief Executive of the Pestalozzi International Village since July 2011. Since she arrived at the Village, Pestalozzi has made an effort to keep in close touch with the Parish Council and either Sue or her representative have attended most Council meetings. We do hope that the limited events that have been arranged at Pestalozzi this summer will not cause too much disturbance to local residents. A great deal of work has gone on behind the scenes to try to reach a reasonable position that will meet Pestalozzi's needs but not upset the community.

Thanks to Mark Winchester of Blackbrooks Garden Centre, we now have flower tubs on the edge of the Green. We are grateful too for his generous gift of a Christmas Tree to the Village.

We have tried to keep the community involved this year, sending out surveys relating to the tennis courts and emergency help. The Parish Council responded quickly to the County Council's request that we should encourage local people to register their interests in getting the infrastructure for Superfast Broadband to Sedlescombe sooner rather than later. See back cover.

I look forward to meeting many of you on 17 April. Please remember that you can help make it an interesting meeting. Bring along lots of questions.

March 2012



MINUTES OF MEETING ON TUESDAY 26/04/2011 IN SEDLESCOMBE VILLAGE HALL, 1930 TO 2045

Total present: 85 persons including: Cllr Valerie Wright (Chairman of Sedlescombe Parish Council) in the chair; Cllr Anthony Rand (Vice-Chairman of Sedlescombe Parish Council); Parish Councillors Pauline Glew, Pat Martin, Jenny Mitchell, Jonathan Vine-Hall; Pauline Raymond (Clerk/Responsible Financial Officer of Sedlescombe Parish Council); County Councillor Peter Jones; District Councillor Tony Ganly.

1. CHAIRMAN'S OPENING REMARKS. After welcoming those present, Cllr Wright gave the usual health and safety information and then thanked the following:

- PCSO Demetrius Georghiou for his important work in the Village. The new Rother Police Sgt was also present. Sgt Paul Masterson had recently replaced Sgt Dan Russell who had moved to Bexhill.
- John Bartholomew of Orchard Way for undertaking various small jobs around the village.
- Reg Glew, particularly for designing and making the Council's demonstration pump.
- Volunteers who deliver Bulletins and Annual Report/Directory.
- Jonathan Vine-Hall for helping with taking down the old village sign and putting up the new one.
- Councillors who had retired during the last four years - Robert Dudman, Bill Cameron, Ralph Dellow, Caitlin Wheatley, John Marland and Mary Irwin who had served as a parish councillor for 20 years.
- Councillors Rand, Glew, Martin, Mitchell and Vine-Hall who will be remaining as councillors.
- Colin Boyd for his work at Red Barn Field Nature Park including his excellent photographs which can be seen on the www.sedlescombe.org.uk website.
- Neighbourhood Watch Co-ordinators.
- Judy Torrance who does the Village Voice
- Editors of the Sedlescombe News.
- Lift Scheme drivers where reimbursement has now increased to 50p/mile.
- Library ladies.
- Churchyard mowers, cleaners, flower arrangers.
- Litter collectors including Pestalozzi students.
- Local businesses whose adverts supported the printing of the Council's

Annual Report and Directory.

- Warr Partnership and Battle Partnership for their generous grants during the year. Battle Partnership had paid for the printing of a booklet by the Clerk entitled "Sedlescombe Pump and Pumphouse - a brief history" and the demonstration pump and trolley.

The Chairman asked for further volunteers to contact Cllr Vine-Hall. She reminded the meeting of the Spring Fayre on the Green on Saturday between 1 and 4pm.

The Chairman introduced Roy Chapman and John Reynolds to the meeting, who, together with Julian Heap will become Sedlescombe parish councillors on 09/05/11.

The Chairman then spoke of the wonderful contribution by Jenny and John Mainwood to local life in their running of the Village shop where a wide variety of services and goods are on offer. This was followed by the presentation of a framed Citizenship Award 2011 certificate to Jenny and John.

Display tables had been set up around the hall by: Richard Jordan Plumbing; Haven Frames; Sedlescombe School - now have two walking buses.; Sedlescombe branch of the Royal British Legion. Member Martyn Compton will be attending the Royal Wedding this week; Sedlescombe Parish Church; Sedlescombe WI; Sedlescombe Bowls Club - few vacancies; Pestalozzi International Village - holding a vintage agricultural weekend in August; Red Barn Field Nature Park and information from the Parish Council

2. MINUTES OF THE ANNUAL ASSEMBLY OF THE PARISH MEETING OF SEDLESCOMBE HELD ON 27/04/10. The Minutes which were part of the Parish Council's Annual Report 2011 and Directory had been delivered to each household in the Village. **RESOLVED:** That the Minutes of the Annual Assembly of the Parish Meeting of Sedlescombe held on 27/04/10 are approved.

3. REPORT BY COUNTY COUNCILLOR PETER JONES. A printed report had been provided summarising the County Council achievements in 2010-11.

Cllr Jones began by congratulating Sedlescombe Parish Council on its work during the year.

East Sussex County Council is working hard through the South East Alliance with six other local authorities to find cuts in revenue spending for East Sussex equal to 27% over a four-year period. The aim is to maintain Council Tax at the same level and, at the same time, to preserve core services. Although, some difficult

decisions have had to be taken, County Cllr Jones remains optimistic that some improvements can be made, especially if new ways of working can be adopted. He reported that he had recently met with Jeremy Hunt, Secretary of State for Culture, Olympics, Media and Sport, seeking his support for bringing super-fast broadband to East Sussex as soon as possible. Cllr Jones sees super-fast broadband as a vital way of encouraging businesses to come to the county.

Cllr Jones ended his report with the information that, although he will be remaining as Leader of the County Council for the next two years, he will not be standing for election in 2013.

4. REPORT BY DISTRICT COUNCILLOR TONY GANLY. Councillor Ganly reported that Rother DC had been tasked with finding 29% cuts over the next two years. Work has been in hand for 18 months at resetting services ie finding ways to provide services differently. Staff had been assured that, up until May 2011, there would not be any compulsory redundancies, although to date there have been 32 requests for voluntary redundancy. Staff numbers are expected to be reduced to 230. The Beeching Road offices have been closed and the building will be relet. Joint working with other local authorities will provide savings. Economies of scale should provide savings of up to £1 million if a single joint waste collection authority involving Eastbourne, Hastings, Wealden and Rother can be set up.

Cllr Ganly explained the workings of the Planning system and said that he is always happy to help with planning applications but can only object if there are sound planning reasons for the objection.

Cllr Ganly ended his report by speaking of the Parish Council's interesting meetings and thanking members and the Clerk for their support.

5. SEDLESCOMBE PARISH COUNCIL REPORT. The Council's Report had been delivered to every household in the parish of Sedlescombe.

A financial statement for the Parish Council and the account for the Pump and Pumphouse Projects had been made available to those present. Pauline Raymond, the Council's Clerk/Financial Officer, gave a short report on the Council's finances. The main points were as follows:

Warr Partnership had provided 80% of the cost of the Pump and Pumphouse Project, the remaining 20% coming from local fundraising. There had been no direct cost to the Sedlescombe Council Taxpayer.

Battle Partnership had provided the entire funding for the booklet on the pump and pumphouse. There had been no direct cost to the Sedlescombe Taxpayer.

The Village Sign had been replaced using the original design but made out of polyurethane resin. There had been no direct cost to the Sedlescombe Council Taxpayer as prize money received from the 2009 Village of the Year Competition and money from a Quality Council grant had been used.

Some jobs remained outstanding at the end of 2010/11, namely replacement of the front Sportsfield fence and planting of a hedge, sorting out the ceiling at the pumphouse and cementing the base of the pump. These are expected to be completed in 2011.

A major cost for the Parish Council in the 2011/12 financial year is a contribution towards the repair of Ladybird Lane as far as the Sportsfield Car Park. £4,000 has been allocated in the budget.

The cost of training three new councillors and updates for the remaining councillors and the Clerk has been included in the budget.

£2,000 had been allocated for the Parish Council elections but, with just the right number of candidates, no election will be needed and the money can be used elsewhere.

Savings may be used to repair the bus shelter outside Pollards and a metal fence may replace the wooden one by the river in the children's playground.

What to do with the tennis courts, now that the surface is beginning to break down, is being considered.

Sponsorship is being sought for placing six flower troughs on the top parts of the Green in an attempt to stop vehicles driving over it or parking on it.

6. ANY OTHER BUSINESS

QUESTIONS. The Chairman invited questions to the three local authorities represented on the stage. The following were asked and answered as appropriate:

- Planning application to remove personal and temporary conditions relating to the Spilstead Airstrip. Cllr Ganly stated he was fully aware of the feelings of local people about this development. The decision on the application currently stands deferred for an inspection.
- The Sedlescombe Youth Committee is concerned about how it will keep the Youth Club running after the Youth Development Service funding ends in May 2011. £14,000-£15,000 is currently being spent a year on wages and rent for a twice-weekly Youth Club for the Village held at Pestalozzi. Ralph Dellow is helping with fund-raising and a quiz is to

be held on 20 May. More ideas of where funding can be obtained are needed. The Chairman congratulated the Committee on their running of the Club and thanked Pestalozzi for providing the accommodation.

- The importance of retaining the public conveniences in the Brede Lane Car Park was highlighted. Cllr Ganly said he did not think they would be closed but that the Parish Council might be asked to look after them.
- The importance of retaining free parking in the Brede Lane Car Park was highlighted. Cllr Ganly said he could not rule out the possibility of charging being introduced as a way of Rother raising finance. Local residents who were present were appalled at the suggestion fearing any introduction of charging would force car drivers to park in Village roads. Cllr Jones reminded the meeting that the Localism Bill gives greater powers to local authorities to do things differently and he feels that innovative ways of discouraging on-street parking may be found. He referred to parking problems near railway stations and suggested that councils should work with the railways, maybe even doubling their parking areas by building two-storey parking areas. In this way, with double the number of spaces, they might be able to reduce the cost of parking.
- Cllr Jones agreed that, if multi-storey parking was introduced, the difficulties experienced by disabled drivers and others who have to use high vehicles will need to be addressed.
- A request for greater subsidisation of public transport was made, rather than more cars parks and road improvements which only increase the amount of traffic. Cllr Jones spoke of the work being done with parish councils to introduce local transport schemes. This could involve community buses or even taxis. However, Cllr Jones said that the County Council is unashamedly pro-car and that, now that East Sussex is getting a fair share of the national capital budget according to its size (ie 1%), an extra £30 million has been received, of which £25 million is expected to be spent on road improvements in the county.
- Endorsement of the need to increase broadband speed to a reasonable level. Cllr Jones commented that, with only eleven miles of dual carriageway, it is difficult to attract businesses to the county but, with the East Sussex education system encouraging maths and IT skills, and faster broadband, relevant businesses could be willing to move here.
- The need to do something about the ever-expanding Budget Car Company was highlighted. Cllr Ganly informed the meeting that on-the-spot fines had been imposed for parking too many cars for sale on the highway and now the matter had been put in the hands of Rother's legal department.

- The need for the introduction of yellow lines to stop inappropriate parking and last year’s suggestion that it would take many years for East Sussex County Council to be able to undertake a full-village investigation prior to the introduction of a yellow-line scheme was mentioned. Cllr Jones informed the meeting that, with the extra capital money now being available, East Sussex County Council would be considering whether the introduction of yellow lines would be an appropriate use of the funds.
- The abandonment of cars on The Green roadway by Budget Car Company. Could residents’ parking be introduced? Cllr Jones agreed to investigate.

7. CLOSURE. The Chairman closed the meeting by thanking the Clerk and Councillors for their hard work for the Village. Cllr Rand thanked the Chairman for her leadership and inspiration.

Chairman..... Date.....

ATTENDING PARISH COUNCIL MEETINGS

Anyone is very welcome to attend parish council meetings and those of its committees. At the meetings, members discuss issues, formulate policies and make decisions on matters affecting Sedlescombe and those who live here. Most council meetings are held on a Tuesday evening in Committee room 2 of the Village Hall. Times of meetings vary.

Notice of agendas are placed on the www.sedlescombe.org.uk website and on the noticeboard on the outside wall of Sedlescombe Stores.

Anyone can submit an item to be placed on a Sedlescombe Parish Council agenda by writing by letter or e-mail to The Clerk at least a week before the meeting. Anyone, with the Chairman’s permission, can speak at the meeting but only if the item is on the agenda.

HOW ABOUT BECOMING A PARISH COUNCILLOR?

Our parish councillors are people who care about Sedlescombe and those who live here. Sedlescombe has won many different awards over the years, it was the first parish in Rother District to achieve Quality Council status and, in 2011, was granted the Power of Well-being. There are nine members and vacancies occur occasionally. When they do, if you are qualified to apply, why not put your name forward and help to shape Sedlescombe’s future?

CLLR VALERIE WRIGHT, 01424 870220, Council Chairman. Valerie joined the Council in 1995, becoming Chairman in 1999. She is ex-officio member of every Council committee and represents the Council at many meetings of outside bodies. She is one of Sedlescombe's representatives at meetings of the Rother Association of Local Councils. Valerie is Chairman of the Sedlescombe Friendship Club and raises funds for it and the Youth Club.



CLLR JONATHAN VINE-HALL, 07973 129505, Council Vice-Chairman and Chairman of Planning Committee. Jonathan has lived in Sedlescombe since 2003 and farms Hurst Estate between Brede Lane and Cripps Corner. He was co-opted to the Council in 2010, is an ex-officio member of every Council committee and is actively involved in maintenance of parish footpaths. In 2010 Jonathan won the Gold Medal at the European Western Riding Championships and plans to compete in the World Show in the US in 2012. He has four rescue dogs.



CLLR PAT MARTIN, 01424 870353, Chairman of Emergency Committee, member of Planning Committee. Pat joined the Council in 1983 and is Sedlescombe's long-standing Tree Warden. He is the Parish Council's representative on the Committee of Sedlescombe Sports Association. Pat is a successful member of the Sedlescombe Golf Club.



CLLR PAULINE GLEW, 01424 870258, Chairman of Finance Committee, member of Planning Committee. Pauline joined the Council in 2003. She is the Council's Village Hall Trustee, oversees the working of the Sedlescombe Lift Scheme and is one of the Council's two representatives on the Rother Association of Local Councils. She also represents the Council on Sedlescombe Neighbourhood Watch and meetings about Transport. Pauline is Treasurer of the Friendship Club and helps with the Extend Exercise Class & outings.



CLLR JENNY MITCHELL, 01424 870707, Chairman of Sedlescombe Playing Field & Recreation Ground Trust and a member of the Planning & Emergency Committees. After a short break, Jenny was co-opted back onto the Council in 2007. Outside Council work, Jenny is Treasurer of Sedlescombe Green WI, Booking Clerk for the Village Hall and, twice a week, works voluntarily in the Demelza Hospice shop in Battle



CLLR ROY CHAPMAN, 01424 870520. Member of Emergency and Finance



Committees. Roy was elected to the Council in May 2011. He has lived in and been associated with Sedlescombe and its surrounding areas for more than 40 years and runs his own building business here. He is a member of Battle & Villages Lions Club and is on the Committee of the Sedlescombe & District Garden Society. His interests including photography, the arts and conservation.

CLLR JULIAN HEAP, 01424 871178. Member of the Finance Committee.



Julian was elected to the Council in May 2011. He moved to Sedlescombe in 2001 and runs his own Home Entertainments/Multimedia business. He is a keen motorsport fan and is a member of the Tunbridge Wells Motor Club.

CLLR JOHN REYNOLDS, 01424 870956. Member of the Planning and



Emergency Committees. John was elected to the Council in May 2011. When he first came to Sedlescombe in 2004, John built himself and family a new house in Hurst Lane. He has been involved in work for Great Ormond Street Hospital via his involvement with the Masonic lodges and supports several other charities. He is passionate about the countryside and its well being and likes walking, fishing and gardening.

CLLR ROD ELDRIDGE, 01424 870983. Member of Finance Committee.



Rod is the newest parish councillor, having been co-opted in January 2012. He is retired and worked in local government for over 40 years. He is a committee member of The Sedlescombe and District Garden Society and organises trips to places of interest for members. He has a large garden and an allotment. Rod is a member and Past President of Battle and Villages Lions Club and raises money for local charitable causes.

KNOW YOUR PARISH CLERK

PAULINE RAYMOND, 01424 870508.



Pauline Raymond, has been the only employee of the Parish Council since 1975. Her role of Clerk/Responsible Financial Officer covers all aspects of Council work. She is interested in Sedlescombe's history and has a wide collection of photographs dating back to 1900. Pauline's hobbies include wildlife watching and photography around the world and is thoroughly enjoying her four small grandchildren.

SEDLSCOMBE PARISH COUNCIL FINANCIAL REPORT

INCOME

Precept. For the first time in four years, the Council has increased the precept for next year (2012-13). This will cover budgeted expenditure and allow the level of general reserves to be increased as recommended to parish councils.

Other income. The 2012-13 budget for “other income” includes the “MUGA” (multi-use games area) loan which the Council will consider taking out if sufficient grant aid and fund-raising is not obtained towards the upgrade of the tennis courts. This is in accordance with the wishes of those who completed the Playing Field Trust survey form in December 2011. A new Management Agreement with Rother DC for maintaining the grass areas of the car park was signed in 2011-12 and the income for this work is included. The other main income is from the sale of advertising in the Council’s Annual Report and Directory which usually just about covers the printing costs of the booklets allowing one to be issued to every household.

EXPENDITURE

Staff costs have been kept at the same level for four years.

Repayment of the pavilion loan continues at £4,643 each year. The 2012-13 budget entry also includes one repayment of a new MUGA loan.

Other costs. This year, the expected contribution towards a new bus shelter outside Pollards in The Street from a developer did not materialise. The Council decided therefore that money not needed for the parish council elections should be used in order to carry out a major overhaul of the bus shelter. This work is now complete and included replacement of the roof.

Two new fences have been erected, both by D&B Fencing, a company within our parish. The first is on the road side of the pavilion and the other is in the children’s playground, adjacent to the river.

Although not strictly its responsibility, the Parish Council agreed a one-off assistance to the Sports Association by arranging clearance of the Sportsfield ditch. The Football Club and Pestalozzi helped towards the total cost.

Next year, the Council has budgeted for general administration, MUGA costs, regular work such as grass cutting, weedkilling and litter collection. The litter collection by itself costs nearly £1,000 a year.

P Raymond, Responsible Financial Officer, February 2012

PARISH COUNCIL ACCOUNTS

FINANCIAL STATEMENT FOR 3 YEARS 2010-11, 2011-12 AND 2012-13	Final 2010-11	Estimated 2011-12	Budget 2012-13
BROUGHT FORWARD	£45,780	£48,732	£42,371
INCOME			
Precept	£31,500	£31,500	£33,500
Other income	£14,488	£2,455	£14,960
Total Income for the year	£45,988	£33,955	£48,460
EXPENDITURE			
Staff costs	-£14,800	-£14,693	-£15,000
Loan repayments	-£4,643	-£4,643	-£5,425
Total other costs	-£23,593	-£20,980	-£27,317
Total expenditure	-£43,036	-£40,316	-£47,742
BALANCES AT YEAR END	£48,732	£42,371	£43,089
Represented by			
General funds	£16,056	£10,428	£11,146
Sportsfield Fund	£1,200	£597	£597
Pump Project Fund	£148	£8	£8
Red Barn Field Fund	£217	0	0
Village of the Year prize money	£111	0	0
Clerk's Gratuity Fund	£31,000	£31,338	£31,338
BALANCES IN FUNDS	£48,732	£42,371	£43,089
Council Tax Base	660.99	661.59	676.34
Band D Council Tax	£47.66	£47.61	£49.53

*Note: At 1 February 2012, the balance outstanding on the Public Works Loan Board 3.86% fixed-rate loan stood at £44,261.

SEDLESCOMBE PARISH COUNCIL IS PLEASED TO SUBMIT ITS 2011-12 REPORT

House-building has been high on the agenda this year. Several new properties have been completed including five new houses next to the Doctors' Surgery. Unfortunately, the traffic situation in Brede Lane is now worse than ever, particularly at School arrival and departure times. Poor visibility caused by parked cars, together with a lack of courtesy by drivers who feel they must force others up on to the pavement, continues to create a dangerous situation for all pedestrians including school children. The Parish Council has been made aware of the problem and is working with the School and other parties. It is considering various options which might help the situation.

Ivy Cottage. Because of this traffic, it was with some concern that notices of planning applications in Brede Lane for additional housing were received. An application for 3 houses at the rear of Ivy Cottage caused a storm of protest from neighbours. This application remains on hold.

East View Terrace. This was followed by Amicus Horizon's plan to demolish the



garages at East View Terrace and replace them with nine additional properties.

Again, letters and petitions arrived from those already living on the 110-house Estate who were worried about the congestion that will be caused on the narrow

Estate roads, less room to park and the loss of garages which would have been used more if they had been better maintained. The Parish Council objected to the development for the same reasons as residents and also because of the existing Brede Lane congestion. Added to this was the problem caused by the removal of useful storage areas in the garages and the loss of the only possible recreational and community land on the Estate. Rother's subsequent refusal of the application, whilst welcome, ignored these reasons being based rather on objections to the overbearing nature of the proposed block of four flats.

Street Farm. The third new development planned for Brede Lane is altogether larger with a proposal for 40-45 new houses, a new pre-school building, workshops and additional school playing fields situated next to Street Farm in Brede Lane. Although this site (seen in the photo below from the Sportsfield) has already been “pencilled in” for limited development by Rother District



Council, it remains outside the development boundary. The developer has assured the Parish Council that this number of houses is essential to subsidise the pre-school building which could provide a 5-full-day a week pre-school in close proximity to the School. The Parish Council has objected to the whole proposal because of serious concerns that the houses, pre-school and workshops are bound to add to the existing traffic congestion in Brede Lane especially at school times.

Manor Cottages. Manor Cottages in the Street is Sedlescombe’s only Grade I listed building and the Council was, therefore, concerned at proposals to build a conservatory onto part of the building much of which is 15th and 16th century. However, during consideration of the planning application, it became



clear that the listing was not entirely correct as the wing occupied by 1 Manor Cottages is a late 19th century addition. This was confirmed by English Heritage. For this reason, Rother decided that the Victorian design of the proposed conservatory was appropriate for the Victorian elevation that it is to be attached to. In addition, they stated that the conservatory

can be seen as part of the evolution of the building which previously has been extended and adapted as its use has changed.

Public Toilets and Car Park. Rother District Council has always maintained the public toilets and the car park in Brede Lane but the Parish Council has now been invited to take over their maintenance on a lease. The Parish Council has refused the offer as it does not feel there is any advantage in taking them over. This may be the start of a longer process, especially as Rother Council is trying to increase income from its car parks across the District to £100,00/year. We await further developments. On the subject of the car park, it is acknowledged that, at School arrival and departure times, its size is totally inadequate, especially when they coincide with surgery times and when School staff also have to park. Having 63% of the schoolchildren living outside the Village means that parking is always going to be an issue.

Hazards for schoolchildren. During councillors' consideration of the Brede Lane parking problems, several other hazards were highlighted and drawn to the attention of the responsible bodies. These were the emptying of recycling bins in the car park and lorries arriving at the Pumphouse Yard opposite the School at the same time as schoolchildren arrive and possible problems caused by senior school buses turning round in the Village.

Budget Car Company. Before the Budget Car Company left the Village at the end of January 2012, they had been taken to court by Rother District Council for breaking The Environmental Protection Act 2003 by selling too many cars on the highway. They had received the maximum fine. As they were leaving the Village, a second case was brought before Hastings Magistrates by Rother to which they pleaded "not guilty". A trial is planned for April.



Pestallozzi. After a difficult summer at Pestallozzi in 2011 with several events that turned out to be very disturbing for local residents, the Council hopes that we have turned a corner and that the coming summer will be more acceptable. Pestallozzi's new Chief Executive, Sue Walton, is keeping in close contact with the Parish Council and plans to ensure that the number of events, other than in connection with education or agriculture, will be reduced and kept within

the 28-day allowance. Work will soon be underway on building six new homes on the Estate and Ladybird Lane has had a new covering which has improved access to the Sportsfield Car Park. It is expected that, this Spring, as part of the development at Pestalozzi, the junction at the bottom of Chapel Hill will be altered to give safer access to both Ladybird Lane and Chapel Hill.





Unfortunately, the Sportsfield is another place that has a totally inadequate car park for the increased use being made of the pitches at weekends. Unauthorised parking has taken place in the Lane. Quite reasonably, Pestalozzi has complained because the obstruction of the Lane hampers the ability of emergency vehicles to reach Pestalozzi buildings and the other properties on the Estate. Although now almost entirely used for football with just a few games of cricket, it is good news that the the Sportsfield is so popular. However, a solution must be found. We also need parking for users of the tennis courts and children's playground and ways of providing additional parking space are being considered by the Parish Council..

Superfast Broadband. The Parish Council is giving its full support to the County Council in its attempts to get Superfast Broadband brought to the Village. All local businesses have been alerted and everyone is being asked to register their interests. Families should be aware of what an important utility Superfast Broadband is and will increasingly become in the future for all age groups. If we do not keep up with the towns in the south east, we are likely to start feeling the effect of people not wanting to purchase properties which have low connection speeds.

Tennis courts. Finally, the community's views on the future of our tennis courts were sought by the Council in its role of trustee of the Sedlescombe Playing Field & Recreation Ground Trust. Survey forms were distributed throughout the parish and, although only 20% were returned, they gave useful information. The majority who replied supported upgrading the courts and the three favourite sports identified were tennis, netball and football in that order. At the time of writing, final decisions are still being made in consultation with users. The issue of funding is being considered and grant applications are being submitted. The Trust is very grateful for the promise of an anonymous local donation of £1,000 and for a £1,500 grant from the Mrs A Lacey-Tate Trust. A further update will be given at the Assembly.

March 2012

ACCOMMODATION	ACCOMMODATION
<p align="center">BRICKWALL HOTEL The Green Sedlescombe</p> <p>T: 01424 870253 F: 01424 870785 E: info@brickwallhotel.com W: www.brickwallhotel.com</p>  <p>Hotel and restaurant, parties catered for. Heated outdoor swimming pool open May-September. 45 car parking spaces.</p>	<p align="center">* * * *</p> <p align="center">FORGE HOUSE Bed & Breakfast</p> <p>The Green, Sedlescombe, TN33 0QA</p> <p>Contact: Mrs Jean Russell-Parnell T: 01424 870054 M: 07779 988716</p> <p>Member Tourism South East</p> 
ACCOMMODATION	ARCHITECTURAL
<p align="center">Kester House Bed & Breakfast</p> <p align="center">www.kesterhouse.co.uk</p>  <p align="center">The Street, Sedlescombe 01424 870035</p> <p align="center">Luxurious Old World Charm</p>	 <p>PumpHouse Pump House Yard DESIGNS The Green Architectural Consultants Sedlescombe East Sussex TN33 0QA</p> <p>T: 01424 871120 F: 01424 870198</p> <p>Email: info@pumphousedesigns.co.uk Web: www.pumphousedesigns.co.uk</p> <p align="center">FREE QUOTATION & INITIAL ADVICE</p> <ul style="list-style-type: none"> ◆ NEW BUILD ◆ EXTENSIONS ◆ ◆ LOFT CONVERSIONS ◆ ALTERATIONS ◆ ◆ PLANNING APPLICATIONS ◆ ◆ LISTED BUILDING APPLICATIONS ◆ ◆ BUILDING REGULATIONS APPLICATIONS ◆
BUILDERS & DECORATORS	BUILDER & DECORATOR
<p align="center">BEM BUILDERS & DECORATORS LTD</p> <p align="center">(Federation of Master Builders)</p> <p align="center"><i>Contractor for refurbishment of Sedlescombe Pumphouse in 2010</i></p> <p align="center">General building, Extensions, Conversions, UPVC Cladding, Roofing, Disabled adaptations, Concrete repairs, Decoration</p> <p align="center">T: 01424 434304 M: 07885 117970</p> <p align="center">E: james@bembuilders.co.uk www.bembuilders.co.uk</p>	<p align="center">CHAPMAN BUILDERS LTD</p> <p align="center">Ashdown Cottage, Cottage Lane, Sedlescombe</p> <p align="center">T: 01424 870520 Established 1971</p>  <p align="center">General builder, decorator, carpenter</p> <p align="center">NO JOB TOO LARGE OR TOO SMALL</p>

BUILDER	BUILDERS MERCHANTS
<p>DD CONSTRUCTION Excellent feedback on Checktrade.com</p> <p>Bricklaying, any type of new build, extensions, driveways, full refurbishment</p> <p>DPC injections, wall tie replacements (20-year guarantee)</p> <p>ALL WORK GUARANTEED</p> <p>T: 01424 899717 M: 07531 950059 E: benn959@aol.com</p>	<p><i>Celebrating trading 15 years : 1996-2011</i></p> <div style="border: 2px solid green; padding: 5px;"> <p>Chalk Down Lime.co.uk </p> <p>TRADITIONAL, MODERN & ECO BUILDERS MERCHANTS</p> <p>CONSERVATION - RESTORATION - NEW BUILD - DIY MORTAR - PLASTER - SAND & AGGREGATES - PAINTS - TOOLS</p> <p>THE LIME YARD, NORTHIAM ROAD, STAPLECROSS, EAST SUSSEX, TN32 5RP T: 01580 830 092 F: 01580 830 096</p> <p>WWW.CHALKDOWNLIME.CO.UK</p> </div>
CAR REPAIRS	CAR REPAIRS
<div style="border: 1px solid black; padding: 2px;">  <p>LWA BODYSHOP LIMITED</p> </div> <p>Accident repair with Paintless dent removal Vehicle Restoration & Insurance Approved</p> <p>Bridge Garage The Street, Sedlescombe David Barnes TN33 0QB T: 01424 870488 - M:07967 838591</p> <p>New Commercial Size Spray Booth</p> <p>david@lwabodyshop.eclipse.co.uk</p>	<p>TIVOLI AUTO SERVICES</p> <p>100 Battle Road, St Leonards-on-Sea, TN37 7AG T: 01424 442277 www.tivoliautoservices.co.uk</p> <p>Motor car repairs: MOT: Servicing: Sales: Air Con Specialist: Free Loan Car: Free Collection & Delivery: On-site Bodyshop & Professional Valet Service</p> <p>Estimates and Insurance Work undertaken</p>
CAR REPAIRS	CHIROPODIST/PODIATRIST
<p>BRIDGE GARAGE WORKSHOP</p> <p>The Street, Sedlescombe</p> <p>T: 01424 870202</p> <p>General repairs, Tyres and Servicing</p> <p>MOTs and range of car care products</p> 	<p>HPC Registered</p> <p>HOME VISITING SERVICE</p> <p>Andrea Birtwistle DPodM MChS</p> <p>T: 01424 870012 M: 07931 974486</p> 

CLEANING	DECKING & FENCING
<p>CONQUEST CLEANING SERVICES LTD 14 Orchard Way, Sedlescombe TN33 ORD T: 01424 871444 (Mr Mike Langley)</p> <p>Quality cleaning of carpets, upholstery, rugs and curtains using the very latest equipment for the best possible results. Rapid drying times and FREE emergency stain removal for all our customers.</p> <p><i>Members of the National Carpet Cleaners Association and ESCC Trading Standards approved</i></p> <p>www.conquestcleaning.co.uk</p>	<p>John Grice  PROPERTY & GARDEN IMPROVEMENTS</p> <p>INSTALLER OF QUALITY FENCING & DECKING</p> <p>'Little Bushey', Meadow Lane, Sedlescombe, Battle TN33 0RF</p> <p>TELEPHONE SEDLESCOMBE 01424 870137 • 07717 573185</p>
DOCTORS	
<p>DR S STERN & PARTNERS</p> <p>The Surgery, Brede Lane, Sedlescombe TN33 0PW T: 01424 870225; F: 01424 870912 www.drsternandptnrs.co.uk (also at Westfield 01424 751609)</p> <p>Opening hours for Sedlescombe Surgery Monday to Friday 08:30-13:00 Monday & Friday 16:30-19:00 Wednesday 13:30-17:00</p> <p>Practice leaflet available from surgery. New patients should collect a registration form and arrange a new patient appointment (ID required)</p>	
DRAINAGE	ELECTRICAL
<p>ECOFLO GARDEN IRRIGATION LTD SPECIALISE IN</p> <p>Recycling solutions to Septic Tank, Treatment Plant Soakaway issues. Reducing escalating cesspit costs.</p> <p>Septic Tank Maintenance Surface Water Issues</p> <p>T: 01424 871081 or M: 07840 172432 www.ecoflo-irrigation.co.uk</p> <p>Stream Farm, Stream Lane, Sedlescombe</p>	<p>ALTEC ELECTRICAL SERVICES</p> <p>NAPIT approved Electrician. Work includes: Re-wires, new builds, extensions. Extra sockets and Lighting, Storage heating. Fuse board replacement. Installation testing/inspection and P.A.T. testing. Work compliant to BS7671 and Part P of the Building Regulations.</p> <p>Free estimates and warranty backed.</p> <p>Alan Birtwistle, Sedlescombe T:01424 870012 M:07941 869398</p>

FENCING	GOLF RESORT
<p style="text-align: center;">D&B FENCING</p> <p>All types of fencing, gates, decking and pergolas supplied and installed</p> <p style="text-align: center;">Free estimates Friendly advice</p> <p>T: 01580 831800, 01424 870484 Sedlescombe Sawmills, Cripps Corner E: fencingbydandb@hotmail.co.uk</p>	<p style="text-align: center;">GOLF COMPLEX</p> <p>18 Hole Parkland Course Par 3 Course Floodlit driving range 20 Bedroom Accommodation Bar & Restaurant Conference Facilities Sedlescombe Golf Club, Kent Street, Sedlescombe TN33 0SG T: 01424 871700 F: 01424 871712 E: golf@golfschool.co.uk www.sedlescombegolfclub.co.uk www.golfschool.co.uk</p>
HAIR & BEAUTY	JOINERY
<p style="text-align: center;"><i>The Clock House</i></p> <p style="text-align: center;">The Street, Sedlescombe 01424 870958</p> <p style="text-align: center;">Friendly - Expert - Experienced</p> <p style="text-align: center;">Hair, Beauty and Holistic Therapies</p> <p>Opening Times: 9.00am-5.30pm Drop in for a friendly and expert consultation</p>	<p style="text-align: center;">J&R Joinery</p> <p style="text-align: center;">Staircases - Windows and Doors - Laminate Flooring - Tiling - General Painting and Decorating</p> <p style="text-align: center;">Roger Messetter T: 01424 772340 M:07759 143139 E: jrjoinery53@hotmail.co.uk</p>
MONEY SAVING - UTILITIES	PLUMBING
<p style="text-align: center;">One monthly bill</p> <p style="text-align: center;">As a member of the Utility Warehouse Discount Club, you SAVE.....</p> <p style="text-align: center;">Single bill for all your utilities Award-winning customer service Value that's unbeatable Easy to switch</p> <p style="text-align: center;">www.sedlescombesavers.co.uk Dave Brabants 0800 083 4489</p>	<p style="text-align: center;">RICHARD JORDAN LIMITED</p> <p style="text-align: center;">Plumbing and Heating</p> <p style="text-align: center;">Millstones Cottage The Street Sedlescombe T. 01424 871165</p> <p style="text-align: center;">Over 40 years experience Specialist in Bathrooms - complete service.</p> <p style="text-align: center;">All plumbing work</p>

RECLAIMED MATERIALS	SHOPS
<p style="text-align: center;">RAND RECLAMATION</p> <p>M: 07768 846800 F: 01424 870722</p> <div style="text-align: center;">  </div> <p style="text-align: center;">MANY NUMEROUS RECLAIMED MATERIALS</p> <p style="text-align: center;">Oak Beams - Old and New Planks, Flooring Tiles, Bricks etc. bought and sold</p>	<p style="text-align: center;">SEDLESCOMBE ANTIQUES & COLLECTABLES MARKET AT BRIDGE GARAGE</p> <p style="text-align: center;">Many shops under one roof Good quality stock old & new</p> <p>Furniture, Household, Jewellery, Art, Books, CDs, DVDs & 100s of other attractive & collectable items at bargain prices.</p> <p>Furniture restoration, chair caning & made to measure soft furnishings Open 7 days - 01424 871424</p> <p style="text-align: center;">A WARM WELCOME EXTENDED TO ALL</p>
SHOP & POST OFFICE	SIGNWRITER & AUTHOR
<p>Sedlescombe Village Stores Ltd. John & Jenny Mainwood, 01424 870250 www.sedlescombestores.co.uk</p> <p style="text-align: center;">Award winning Village Shop</p> <p>Groceries, in store bakery, newsagent, off-licence, confectionery, tobacco, cash machine, DVD hire, photocopier, fax & laminating services. Agents for dry-cleaning & laundry, shoe repairs and film processing.</p> <p>Sub Post Office offering banking facilities, Motor Vehicle Licensing, Euros on demand, other currencies and Travellers Cheques to order and all usual Post Office services.</p>	<p>Mrs J Chapman, Ashdown Cottage, Cottage Lane, Sedlescombe T: 01424 870520</p> <p style="text-align: center;">House names signs etc. AUTHOR OF:</p> <p style="text-align: center;">“LIFE THROUGH THE LENS” <i>A pictorial history of the Village</i></p> <p style="text-align: center;">“HOP-SCOTCH & SPINNING TOPS” <i>The history of the old Primary School</i></p> <p style="text-align: center;">“THE TIMES OF OUR LIVES” <i>Memories of local people</i></p> <p style="text-align: center;">From Sedlescombe Stores or phone as above</p>
TAXI	WINDOWS
<p style="text-align: center;">SEDLESCOMBE HIRE CAR</p> <p>Licensed private hire taxi Long and short journeys Established over 20 years</p> <p>Contact: H.Hannam T: 01424 870397 or M: 07770 478516</p> <div style="text-align: center;">  </div>	<div style="text-align: center;">  </div> <p style="text-align: center;">‘Little Bushey’, Meadow Lane, Sedlescombe, Battle TN33 0RF</p> <p style="text-align: center;">Installer of quality UPVC Windows Doors - Porches - Conservatories Fascia - Soffit</p> <p style="text-align: center;"><i>20 years experience. CERTASS-approved installer.</i></p> <p style="text-align: center;">Telephone Sedlescombe Windows 01424 870137 - 07717 573185</p>



BADMINTON in Village Hall

CONTACT: Shirley Davies 01424 870475

BOWLS - SHORT MAT - established June 2006

WHEN: Meets each Tuesday and Thursday. **TIME:** 2.15-4.30pm

WHERE: Sedlescombe Village Hall (3 bowling mats).

CONTACTS: Mr P Bates, Chairman 01580 753153, Mr C Clark, Secretary 01424 871441, Mr C Boyd, Treasurer 01424 870076.

Contact any officer for further details.

Joining fee £5 + £1.50 each session.



ROYAL BRITISH LEGION, SEDLESCOMBE BRANCH - established 17 November 1930

WHEN: 3rd Wednesday in every month except August.

TIME: 10:30-12:00 noon

WHERE: Queen's Head Public House

CONTACT: Chairman: Mr R Pilbeam 01424 870167

Branch Treasurer: Mrs E Bradbury 01424 870401

The Legion looks after the welfare of ex-service personnel and dependants. Membership is open to all who wish to support the R.B.L. The annual subscription is £14.50 which includes £2.50 for Branch funds. If you would like to become a Poppy Appeal collector, your help would be very much appreciated.

BROWNIES

WHEN: Monday evenings, 5.30-7pm during term time.

WHERE: Sedlescombe Village Hall

CONTACT: Andrea Hunnemen 01424 424112

Lots of activities, outings, craft, badge work and HAVING FUN for girls 7-11. New members will be very welcome.

CHAPEL HILL CHURCH (United Reformed)

WHERE: Chapel Hill, Sedlescombe

WHEN: Services on Sundays at 10:30.

Coffee Mornings fortnightly on Wednesdays 10:30-12:00

CONTACT: Doreen Meredith 01424 870634

E-MAIL: bernard@fidder.co.uk

MINISTER: Reverend Bernard Fidder



CHAPEL HILL CHURCH HIRE

CONTACT: Doreen Meredith 01424 870634, bernard@fidder.co.uk. The well-heated, comfortable, multifunction chapel, seating 45, and the smaller meeting room, are available for use by other village groups, under certain conditions. Includes toilet and basic kitchen, also overhead projector and fixed screen. Please contact the Secretary above for details.

SEDLSCOMBE CRICKET CLUB - established 1768

WHEN: Sundays. **TIME:** 2.30pm

WHERE: Sedlescombe Sportsfield for home games.

CONTACT: J Carthew, 3 Little Park Farm Cottis, Battle TN33 0LX, 01424 774589

The Club plays its main matches on Sunday afternoons during the season and maintains the traditions of amateur sport by engaging in friendly matches (rather than league matches). It does however play in the local indoor league during the winter months. It welcomes new players. Potential recruits phone Aaron Maynard 01424 430526.

DANCE - OLD TIME DANCE CLUB established 1949.

WHEN: Every Friday, October to May. **TIME:** 7.30pm to 10:15pm.

WHERE: Northiam Village Hall.

CONTACT: Miss P Webb, Bankhurst, Sedlescombe 01424 870448.

SUBSCRIPTION: £1 (90 members). Emphasis is given to ensuring members enjoy the social atmosphere of Old Time & Modern Sequence dancing to familiar tunes. New members, from the experienced to the novice, are given a warm welcome and established members are always happy to help newcomers to settle in.



SEDLSCOMBE & DISTRICT FLOWER CLUB

WHEN: Every 2nd Wednesday in the month at 7.30pm

WHERE: Sedlescombe Village Hall

CONTACT: Sheila Benson, Chairman

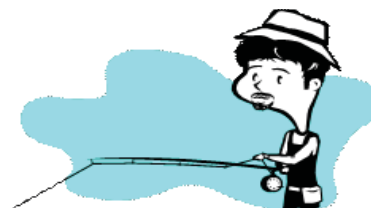
Tel: 01797 223927. E: benson.ferryhouse@btinternet.com

Our annual programme consists of several demonstrations of flower arranging, practice meetings, workshops and social events. Visitors are warmly welcomed.

FISHING - THE HASTINGS FLYFISHERS CLUB LIMITED

CONTACT: Mrs M Stacey - Secretary

Tel: 01424 439633. www.hastingsflyfishers.co.uk



SEDLSCOMBE RANGERS FOOTBALL CLUB

Based at Oaklands Park, Sedlescombe, the club provides football for all age groups and currently has sixteen teams from Under 6s (mini-kickers) to Seniors, making us one of the largest clubs in the area.

The senior teams play in the East Sussex Football League and the junior teams play in the Rother, Crowborough or Sussex Sunday Leagues depending on age and ability. Training is provided throughout the year on grass, G3, astro or indoors at several local venues.

All our Junior Team Managers, Coaches and volunteer helpers are FA Enhanced CRB checked, coaches have a minimum of the F.A. Level 1 Coaching Certificate, and each team has at least one certified emergency first aider.

CONTACT: Fred Ham (Chairman) 07730 623360 or Rod Cornelius (Secretary) 07870 741222 for details or visit our website www.sedlescomberangersifc.co.uk.

SEDLSCOMBE FRIENDSHIP CLUB

The club was founded in 2007 with the aims to advance the welfare of the older people and, in particular, to endeavour to counteract loneliness and isolation. A number of events will be planned each year including Extend chair based exercises, Healthy Walking and a Lunch Club. The dates and times of these and other events will be published in the Sedlescombe News and elsewhere that is appropriate.

CONTACTS: Pauline Glew 01424 870258 and Ralph Dellow 01424 870223

SEDLSCOMBE & DISTRICT GARDEN SOCIETY

MEET: Sedlescombe Village Hall

SECRETARY: Sue Parsons, "The Candles", Swailes Green, Cripps Corner TN32 5QU 01580 831996

MEMBERSHIP: Dave Brabants Tel: 01424 871436



Noticeboard on Sedlescombe Stores for dates and times of events.

www.sedlescombegardensociety.org.uk/

Speakers, outings, shows, plant market etc. Anyone with an interest in plants is welcome to join. Discounts on purchases for gardening items available to members.



SEDLSCOMBE NETBALL CLUB – established 2007

CONTACTS: Sue 07710 110 767, Sarah 07941 553 517 for further details

Come and join us for netball training and match play in a friendly, fun atmosphere! All abilities, all ages 16+ and juniors from 11+.

NEIGHBOURHOOD WATCH

CONTACTS: Jean Dellow (Chief Co-ordinator) 01424 870223, Pauline Glew (Treasurer) 01424 870258, Sally Martin (Secretary) 01424 870353, Reg Glew (Member) 01424 870258, Ralph Dellow (Member) 01424 870223.

Sedlescombe Neighbourhood Watch:

- Offers home security advice and will fit security equipment if needed. This offer is free of charge but is subject to availability of funds.
- Loans an engraving appliance free of charge.
- Will pay the installation charge and first month's rent for Lifeline for Sedlescombe residents.
- Local e-mail system in operation.

PARISH CHURCH - ST JOHN THE BAPTIST

WHERE: St John the Baptist Church, Church Hill, Sedlescombe

WHEN: Sundays at 10am - Parish Eucharist. 1st Sunday in the month is Guest Sunday.

CONTACT: Churchwarden - Andrew Corbett-Nolan 07912 113730. Priest in Charge - Kevin Mephram 01424 870233. Website: www.sedlescombeparishchurch.com

SEDLESCOMBE CHURCH BELLRINGERS

WHERE: Parish Church **WHEN:** Every Wednesday. **TIME:** 7.30pm

CONTACT: Jane Blanford, Carpenters Barn Farm, Kent Street, Sedlescombe 01424 751298

FRIENDS OF SEDLESCOMBE PARISH CHURCH HERITAGE TRUST

CONTACT: Mrs S J Brown 01580 830813 to become a friend.

This charitable trust was established by the late Beryl Lucey for the purpose of assisting in maintenance and restoration of our beautiful 12th century Parish Church and its Churchyard. It provides a means for anyone in the community to contribute to ensuring the long-term survival of this historic building. Several fund-raising events are organised throughout the year.

PESTALOZZI INTERNATIONAL VILLAGE TRUST



OUR MISSION: Our unique two-year scholarship programme in the UK offers academically bright, but economically disadvantaged 16-19 year old students from development countries the chance to realise and develop their potential using the Pestalozzi principles of educating the head, heart and hands.

THE MESSAGE: Our selection process carefully identifies motivated young people who have demonstrated a commitment and the desire to help their home communities but who have limited educational opportunities in their home countries.

At Pestalozzi, the students live in a multi-faith and multi-cultural environment. The students study for the International Baccalaureate (IB) at Sussex Coast College, Hastings whilst actively contributing to the local community, sharing and promoting international understanding to people of all ages.

Our scholarship empowers the students to make informed decisions and take a confident step towards their future aspirations. The success of Pestalozzi is demonstrated by the achievement of our Alumni and the communities they help. To continue our work, we rely on financial donations and the on-going support of our partners.

Pestalozzi is developing new international partnerships that will enable us to recruit students from a wider diversity of backgrounds. We are also using these partnerships to establish work and learning opportunities for the students in their own countries once they leave us.

PESTALOZZI ESTATE: The Pestalozzi Estate is set in the heart of the High Weald AONB and is used by the Pestalozzi students and external organisations for both educational and recreational purposes. In addition, the estate generates income for the Charity through providing a venue for a small number of events such as Tribal Earth and Rural Past Times.

PESTALOZZI OUTREACH: Working with eleven primary and secondary schools across the county, Pestalozzi is co-ordinating a 3-year project, funded by the Department of International Development (DfID), to help develop the curriculum to have greater emphasis on global issues, a better understanding of interdependence and the causes of poverty. It is hoped that these schools will become centres of good practice and will share their work with other schools in East Sussex and across the country.

For more information on any of the above, please log on to www.pestalozzi.org.uk, email office@pestalozzi.org.uk or call 01424 870444.

SEDLESCOMBE PLAYERS

CONTACT: Tara Buchanan (Chairman) 01424 870694.

www.sedlescombeplayers.co.uk

Subscription : £5 p.a.

The Players are a very friendly group with an enthusiastic membership of all ages. We rehearse on Monday nights in the village hall and aim to put on two productions a year, which vary from farce and straight plays to musicals and pantomime. If you are interested in joining us - either onstage or backstage - we would be delighted to hear from you.



PRIMARY SCHOOL - Sedlescombe C E Primary School

WHERE: Gammons Way, Sedlescombe, Battle, East Sussex, TN33 0RQ

CONTACT: Headteacher: Mrs Marian Ham 01424 870585

E: head@sedlescombecep.e-sussex.sch.uk

W: www.sedlescombecep.e-sussex.sch.uk

There are 200 children on roll, aged 4-11 years. The school has seven classes and is built in a beautiful, peaceful location within the Village. We have strong links with our local parish church. All staff firmly believe in, and work hard to achieve, the vision: ***Every child matters ~ Together we enjoy learning ~ Together we achieve ~ Together we succeed.*** We believe in the whole development of every child. We have high standards and are particularly noted for our music, sport and art achievements, and for our forward thinking developments in creative learning. Our standards in reading are particularly high.



We are very proud of our reading, writing and maths end of year results for 2011 which are well above East Sussex expectations, and also the National expectations, for all primary schools.

We welcome parent/carer helpers and helpers from the local community. Our school assemblies on Mondays (10.15am) and Fridays (9.15am) are open to families and the village community. We are an active, exciting, hard-working school with bright, stimulating learning environments, and with a warm, caring Christian ethos. We offer a wide range of after-school clubs, which allow our children to develop a broad range of talents. These clubs include choir, netball, football, ICT, sewing, Zumba dancing, film club, recorder, guitar, violin, keyboard, flute, homework club, homework club, tennis, gardening and others depending on the time of year. We offer a daily breakfast club, opening at 8.00am, and a daily child care after-school club (called our 'Twilight Club') until 5.30pm.

Please enjoy viewing our School Learning Platform accessed from our website. This will keep you up-to-date with all school news, the school calendar, class news, school prospectus, and school celebrations, plus lots more useful information. Visits to our School are always welcomed, please telephone the school to make an appointment.

ICT SUITE. The School has a high quality ICT suite for use by children of the School and the local community. Courses are available for adults of the Village. Please contact the School for further information.

SCHOOL SWIMMING POOL. The School has an outdoor, heated swimming pool. It is open from Easter to end of August, for school children and the local community. We timetable sessions for pre-school children, and adults in our Village. For further information, and to express an interest in using our pool, please contact Mrs Ham at the School. We are keen for this resource to be enjoyed by the whole village community.

SCHOOL MINIBUS. We have a 15 seater minibus for use by our school, local schools, and for the village community. For further information on using our school minibus, please contact our School Business Manager, (Mrs Hernaman) on 01424 870585.

ROTHER SENIORS' FORUM established 2006. Rother Seniors invites local people who are 50+ years to have their say about public services. The Forum speaks out on issues such as Transport, Life-long Learning & Leisure, Health & Care, Housing & Pensions, Crime & Safety. We work with Local and County Council Service Providers so that members keep abreast of, and help shape, developments that affect them.
CONTACT: Ron Sunderland 01424 870801.

SEDLSCOMBE SOCIETIES' ASSOCIATION

CONTACT: Chairman - Mrs R Farley 01424 870533

The Association is run by an elected committee who organise two fayres in the village. The Spring fair on the Green and the annual Summer village Fayre and Flower Show on the sportsfield.

The aim of each day is to provide an enjoyable event for all villagers. All local groups are welcome to participate. The AGM takes place in October when surplus funds raised from the events are awarded to St Michaels Hospice and local village organisations.

SEDLSCOMBE SPORTS ASSOCIATION

An umbrella organisation that promotes sport and manages provision of facilities for sport at Sedlescombe sportsfield. The membership comes from clubs that use the sportsfield.

CONTACT: Secretary: Derek Wright 01424 870035 for further information and field bookings. Chairman: Grant Burberry 01424 814386.

THURSDAY CLUB

WHEN: 1st Thursday in every month except August. **TIME:** 10am to 12 noon

WHERE: Committee Room, Sedlescombe Village Hall

CONTACTS: David and Anthea Post 01424 870590, Eve Bradbury 01424 870401

Speakers on a variety of interesting topics. Meetings are open to all - refreshments included.

HIRE OF SEDLESCOMBE VILLAGE HALL

CONTACT Mrs Jenny Mitchell, 01424 870707 for information about the hall and bookings. E-mail: jennydavidmitchell@hotmail.co.uk

Secretary: Reg Glew, 01424 870258

Established originally in 1920 and completely rebuilt in 2001, this superb facility is available for hire. The hall has a fully-equipped stage and two committee rooms. Excellent kitchen facilities and car parking are also available.

WOMEN'S INSTITUTE - SEDLESCOMBE GREEN (EVENING) established 1975

WHEN: 4th Wednesday in month. **TIME:** 7.30pm

WHERE: Sedlescombe Village Hall

CONTACT: Mrs S Beaney, 11 East View Terrace, Sedlescombe 01424 870688

We are a friendly group meeting monthly with a speaker or some other activity. We join in craft classes and County Events and take part in Group activities and meetings. In addition, we supply tea to visiting Groups.

SEDLESCOMBE YOUTH GROUP

WHEN: Thursdays. **TIME:** 6.30pm to 9pm

WHERE: Pestalozzi International Village, Sedlescombe

CONTACT: Matt Davey on 07891 524500

The Sedlescombe Youth Group meets on Thursday evenings 6.30pm to 9pm at Pestalozzi International Village, Sedlescombe in the Trogen Room. A mini bus picks up from East View Terrace at 6.25pm and from Sedlescombe Pumphouse at 6.30pm, and drops off at the end of the meeting. The group is for young people of 11 years old and above. **CHARGE:** 50p per session

MISCELLANEOUS INFORMATION

ALLOTMENTS. Private allotments at rear of Bulmer Lodge, The Green.

CONTACT: Diane Streeter, 01424 870836

DOGS. In accordance with “**No Dogs**” control orders, issued by Rother District Council, please do not take a dog into the play areas at the Riverside, East View Terrace, the Kickabout Area or into Red Barn Field Nature Park.

There are also “**Clean it up**” orders affecting The Village Green, Sedlescombe Sportsfield, The Riverside Playing Field, The East View Kickabout Area, Brede Lane Car Park and all roads, pavements, grass verges and some public footpaths.



In Sedlescombe Sportsfield, there is “**Dogs on Leads**” control order. The Sportsfield is NOT a public field and dog walkers **MUST KEEP TO THE PUBLIC FOOTPATH** which roughly follows the river **AND MUST KEEP THEIR DOGS ON LEADS AT ALL TIMES.**

The penalty for contravening any of the orders is a fixed penalty fine of £75 which can be imposed by PCSOs. Certain people with disabilities are exempt from the above requirements.

The Parish Council has issued a leaflet showing how the Orders affect dog walkers in Sedlescombe. Contact the Clerk for a printed copy or look on the website.

Dog bins. Sedlescombe has three dog bins provided and maintained by the Parish Council. These are situated at the entrance to the Sportsfield next to the bridge, in the Brede Lane Car Park and in the Riverside Playing Field.

FIREWORKS. PLEASE REMEMBER:

- It is an offence to let off fireworks in a public place or alter them without a licence from HSE.
- It is an offence for anyone under 18 to possess adult fireworks in public.
- Subject to exceptions, no fireworks to be set off between 23:00 and 07:00.
- Exceptions – On New Year’s Eve, Chinese New Year and Diwali, displays can continue until 01:00. On 5 November, fireworks can be let off until midnight.
- Retailers selling fireworks all year round must apply for a licence.



EAST SUSSEX FIRE & RESCUE SERVICE OFFER FREE HOME SAFETY VISITS TO VULNERABLE MEMBERS OF THE COMMUNITY. The visits are carried out by fully-trained Fire & Rescue personnel, who will carry out a full assessment of your property, checking for any potential hazards, giving advice on alternative means of escape and raising awareness of fire safety in the home. Where necessary, we will also provide and install smoke detectors in the property. To see if you are eligible for a visit, please contact us on free phone number 0800 177 7069.

FOOTPATHS & BRIDLEWAYS. East Sussex County Council is the authority responsible for maintenance of public rights of way. However, a lot of practical work has been carried out in Sedlescombe by volunteers keen to improve public access to the countryside including replacing a number of stiles with hand gates.

A colourful leaflet describing several walks around the Village is published by Sedlescombe Parish Council and available in Sedlescombe Stores, price £1.

A map of public rights of way covering the whole county can now be seen on the East Sussex County Council website (www.eastsussex.gov.uk).



HOUSING SUPPORT FOR OVER 65s. "STEPS" can support the elderly to stay living independently. It is funded by East Sussex County Council and provides a free, confidential, short-term service for people aged 65 and over. In Hastings and Rother contact 0300 123 2422 (local rate). E-mail referrals@stepseast.co.uk.

LIBRARIES

Sedlescombe Village Library – established 1953 - run by volunteers

WHEN: Tuesdays. **TIME:** 13:30-14:30

WHERE: Village Hall, Committee Room 2, side entrance

CONTACT: Mrs S Bonney, Highfield Cottage, Church Hill, Sedlescombe 01424 870517. A small village library run by volunteers.

Mobile Library stops at Sedlescombe [Mobile Library (2) based at Bexhill]



WHEN: Alternate Thursdays. **TIME:** 10:50-11:25

WHERE: Park Shaw, Sedlescombe

CONTACT: 0345 60 80 196

Books for adults and children, DVDs and videos, talking books and reference materials.

East Sussex County Council has plenty of information on its website about local libraries and what they offer.

Battle Library (2.49 miles from Sedlescombe)

WHEN: Tuesday to Saturday, closed Sunday and Monday

WHERE: 7 Market Square, Battle TN33 0XA (opposite Fire Station).

CONTACT: 0345 60 80 196 library.battle@eastsussex.gov.uk

A town library with a range of books for loan and reference, talking books, DVDs, a reference and local studies section and free internet and computer access. It has disabled access. There is a photocopier and display facilities.

LIFT SCHEME

CONTACT: Parish Councillor Pauline Glew, 01424 870258

The Parish Council runs this informal scheme to help Sedlescombe residents who find it difficult to attend hospital/surgery appointments because of lack of transport. A list of names of drivers who are willing to provide lifts is published (see Parish Council notice board outside shop) and those wanting lifts simply make a telephone call to any one on the list and pay the driver.

Contact Pauline Glew or The Parish Clerk (01424 870508) if you would like to become a Lift Scheme driver.

MISCELLANEOUS INFORMATION

LIONS CLUB - BATTLE & VILLAGES. Lions Clubs are an international network of men and women who work together to answer the needs that challenge communities across the world - the largest voluntary service organisation in the world. Battle and Villages Lions Club serves the area of Battle, Ashburnham, Catsfield, Etchingham, Hurst Green, Robertsbridge and Sedlescombe. The running costs of Battle & Villages Lions Club, like those of all other Lions Clubs, are met by subscriptions paid by the members, so all monies raised from the public are used for charitable purposes.

Phone 0845 833 5826 or e-mail battlelionsclub@gmail.com.
Website: www.battlelionsclub.org.uk

LOCAL AUTHORITIES

East Sussex County Council, County Hall, Lewes BN7 1UE.

T: 0345 60 80 190. Website: www.eastsussex.gov.uk

County Councillor Peter Jones,

T: 01424 753693 E: cllr.peter.jones@eastsussex.gov.uk

Cllr Jones is Leader of the County Council and Chairman of the Cabinet.

Rother District Council, The Town Hall, Bexhill on Sea TN39 3JX

T: 01424 787000. Website: www.rother.gov.uk

District Councillor Tony Ganly

T: 01580 830704. E: cllr.tony.ganly@rother.gov.uk

Cllr Ganly is a member of the Cabinet.

LOCAL HISTORY

The Parish Clerk maintains an archive for Sedlescombe consisting primarily of photographs dating back to the 19th century. Most of these have been digitised. Do you have anything which could be suitable to add to the collection? You may not want to give your original away but would be willing to allow it to be copied. You may have studied the history of your house or someone who lived in the Village and are willing to place what you have found in the public domain. See the History page of Sedlescombe's website www.sedlescombe.org.uk for some examples of articles about Sedlescombe. Would you like to write a local history article for inclusion? Please contact Pauline Raymond on 01424 870508 or e-mail her on sedlescombe@freezone.co.uk for further information.

FOR SALE - Booklet published in 2010 entitled "*Sedlescombe's Pump & Pumphouse - a brief history*", price £1 from Sedlescombe Stores or from the Parish Council.

NATURE PARK

Red Barn Field Nature Park

The Parish Council is the freeholder of a small nature park at the rear of Sedlescombe Village Hall. It is maintained for the benefit of wildlife and to provide easy access to the hall from the Balcombe Green end of the Village. Survey lists of species are being maintained and can be seen on the notice boards in the Field. In the early part of 2011, the Parish Council, under the guidance of Tree Warden, Cllr Pat Martin, organised the planting of a new community fruiting hedgerow on the Field's boundary with the Village Hall Car Park. This was under the Hedgerow Harvest Tree Council Scheme.

CONTACT: Mrs P Raymond, Clerk to Sedlescombe Parish Council 01424 870508

NEWS

Sedlescombe News is a weekly news-sheet produced by a small team of volunteers and is available, price 20p, from Sedlescombe Stores on Fridays. Leave items for inclusion in the Stores by 12 noon on Wednesdays. Entries are FREE. **The existing editorial volunteer team is always on the lookout for additional helpers. Contact 870258 if you are interested in joining the team.**

Notice board. Items for posting on the Parish Council board outside the shop may be left in Sedlescombe Stores or, alternatively, delivered to the Clerk.

Village Voice column of Rye and Battle Observer. The Village has its own village voice column published in the Rye & Battle Observer which is on sale locally every Friday, providing information on Sedlescombe, local events, groups and organisations. There is no charge for this promotion. Therefore, if you have an event coming up in the local area or would like to have a small piece, outlining your club or organisation aims, activities, membership etc then please drop your information into Asselton House, send via e-mail to judy@asselton.co.uk or call 870344.

Parish Council website, www.sedlescombe.org.uk is full of information about the Council and its work in Sedlescombe. This is also the place to look for links to other useful sites. Why not make it your "Home Page" so that you visit often to keep up-to-date? Contact Pauline Raymond on sedlescombe@freezone.co.uk or phone 870508.

PLAYGROUNDS & TENNIS COURTS

Riverside. Managed by Sedlescombe Parish Council on behalf of the Sedlescombe Public Playing Field & Recreation Ground Trust. The playground next to Bridge Garage Antiques (behind the tennis courts) is suitable for children of 12 and under. There is a good range of modern play equipment. Sedlescombe Parish Council manages two hard tennis courts at the Riverside Playing Field (next to Bridge Garage) for the Sedlescombe Public Playing Field & Recreation Ground Trust. They are available free of charge for public use. If you want to book the courts for club or commercial purposes, please contact the Clerk. NB If you need to arrive by car, please



park in the road or in the public car park in Brede Lane

CONTACT: Mrs P Raymond (Parish Clerk), 01424 870508

East View Terrace Kickabout Area. The Parish Council is the freeholder of a small hard-surfaced area at East View Terrace. There are two storm shooter football goals and two basketball hoops.

CONTACT: Mrs P Raymond, Clerk to Sedlescombe Parish Council 01424 870508.

East View Terrace. Provided and managed by Orbit Housing Association, a new piece of play equipment was installed in 2008.

POLICE

Phoning the Police:

999 in an emergency or when you think a crime could be in progress.
101 is a number to use when you are anywhere to report non-emergency crimes etc. (15p/call). Alternatively, if in Sussex, most non-emergency crime can be reported via the Sussex Police website at no cost.

Crimestoppers:

You can give information about any type of crime totally anonymously by calling Crimestoppers (always open) on 0800 555 111 or you can access their secure online form from their website. Although Crimewatch is a BBC programme not related to Crimestoppers, you can use Crimestoppers to give information about any of the crimes featured in a programme.

Victim Support:

Open Monday to Friday, 8am to 8pm, on 0845 389 9528

POLICE COMMUNITY SUPPORT OFFICER (PCSO)

PCSOs assist Neighbourhood Policing Constables by providing a visible, accessible, familiar and reassuring presence within the local community. They have also been given a number of powers which allow them to deal with low level crime and other quality of life issues. **PCSO Demetrius Georghiou 07788 565 576.**

0845 60 70 999 Extension 26447 to leave messages for our PCSO but not reports of new incidents please which should be left with the operator.

PUBLIC TRANSPORT serving Sedlescombe. Contact 0345 60 80 194

SERVICE 349 (Stagecoach in Hastings 08702 433711) - Sedlescombe to Hastings. 2-hourly daytime, Mon-Sats and Sundays.

B67 COMMUNITY BUS. 1 return journey Sedlescombe to Battle on Tuesdays and Fridays.

B75 COMMUNITY BUS. 1 return journey from Sedlescombe to Sainsbury on Wednesdays.

Eligible older people or those who are registered disabled are entitled to free off-peak travel on local buses throughout England. You will need a bus pass, which must be shown to the bus driver on each journey. Passes can be ordered from any East Sussex library or from Battle, Bexhill or Rye Community Help Points.

POTHoles and the like. Do you ever want to report a nasty pothole or tell someone about some fly-tipping? You can, it is very easy and anyone can do it.

Log in to www.eastsussex.gov.uk/contactus/reportaproblem/default.htm and select the appropriate section. You will need to mark the position on a map, you can attach a photo if you want to and you can also track a reported fault.

RECYCLING

Rother District Council is responsible for this area's recycling services. Contact: 01424 787000 Monday to Friday. Visit: www.rother.gov.uk/recycling.



Sedlescombe residents have the benefit of doorstep collection of some recyclables.

Black box/red bag: Plastic bottles with tops removed, steel and aluminium cans and empty aerosols. No margarine or ice cream tubs or food trays or tinfoil.

Green box/blue bag: Newspapers, magazines, Yellow Pages, white fibre paper, small amounts of shredded paper, small amounts of greetings cards and wrapping paper. No glitter or foil or coloured paper or plastic or plastic-covered paper please.

Green wheelie bin: All green garden waste - leaves, grass cuttings, prunings, real Christmas trees and flattened CARDBOARD. No kitchen waste. No soil or compost, stone or bricks. No plastic bags, plant pots or trays.

Black wheelie bin: All residual waste which cannot be recycled.

Recycling Batteries: most shops selling large quantities of batteries must provide a recycling facility. Special bins at Help Points.. Please take car batteries to Mountfield or Pebsham Household Waste Recycling Sites.

MOUNTFIELD WASTE RECYCLING SITE TN32 5LX managed on behalf of East Sussex County Council. Household rubbish brought to the site by the householder is accepted free of charge. No bonded asbestos, plasterboard, trade or business waste or tyres. Open April to end September, 0900 to 1800 every day. October to end March, 0800 to 1600 (Mondays to Saturdays) and 0900 to 1600 (Sundays).

Mountfield do not take Asbestos. Contact Pebsham Household Waste Recycling Site for information on disposal of small amounts.

RECYCLING BRING CENTRE AT BREDE LANE CAR PARK, SEDLESCOMBE is one of 38 recycling points in Rother. You can recycle paper, glass, books, textiles, cans, plastic bottles, drinks cartons, small electrical goods. White telephone directories and Yellow Pages.

VILLAGE GREEN

The Parish Council is the registered owner of the Village Green and is, therefore, responsible for maintaining its surface, as well as the Pumphouse, the Pump, trees and street furniture. Byelaws have been adopted for the management of the land.



The Parish Council has adopted policies covering the use of the Green for events or advertising. Anyone wanting to use the Village Green, even to put a notice on it, **MUST** contact the Parish Clerk beforehand. Unauthorised signs will be removed.

SUSSEX POLICE AND THE NEW “POLICE & CRIME COMMISSIONER” [PCC]

In September 2011, the Police Reform and Social Responsibility Bill became an Act. This legislation will see Police Authorities throughout the country being replaced with directly elected Police & Crime Commissioners. On 15 November 2012, we will be able to vote for a person to represent us in Sussex in terms of policing for the next four years. This will be a significant shift in power from 17 members of a current Police Authority to one person who will represent the whole county.

The duties of the Police & Crime Commissioner will include appointment and assessment of the Chief Constable, production of a Policing and Crime Plan, and setting of priorities, the Police precept and annual budget.

People standing for election do not have to be politicians and can be independent of political parties. They have no need to have any particular skills although of course it will be to the advantage of the public if they do!

PROPOSED SEDLESCOMBE COMMUNITY FRIENDS SCHEME

A new scheme is being launched in some of our Rother villages with the help of Val Smith of Rother Voluntary Action and funding from The Tudor Trust. The schemes will link those residents who are in particular need with volunteers willing to help and could benefit the elderly, those recovering from illness or accidents or people experiencing particular problems.

Volunteers are encouraged to offer their services only for the time they can spare and for activities that they would feel happy and confident to carry out. These could include practical help such as shopping, collecting pensions and prescriptions and occasional cooking; household repairs such as changing a light bulb, fixing a dripping tap or hanging a picture; one-off gardening; befriending on a regular or occasional basis the elderly, newly-bereaved or people new to the village; or letter writing and form filling where this is needed by sectors of the community.

The Parish Council has been in contact with Val Smith and a Sedlescombe Community Friends Scheme is being considered. Val is planning to be at the Parish Assembly on 17 April and will be pleased to take your contact details if you would like to become a Community Friends volunteer in the Village.

INDEX

ACCOMMODATION

- Brickwall Hotel 16
- Forge House Bed & Breakfast 16
- Kester House Bed & Breakfast 16

ACCOUNTS 10-11

ADVERTISING 10, 16-20

ALLOTMENTS 28

ARCHITECTURAL

- Pumphouse Designs 16

ASSEMBLY AGENDA 2012 inside cover

ASSEMBLY MINUTES 2011 2-7

BADMINTON 21

BELLRINGERS 25

BOWLS 21

BRITISH LEGION 21

BROADBAND 15, back cover

BROWNIES 21

BUDGET CAR COMPANY 14

BUILDING & DECORATING

- Chapman Builders Ltd 16
- BEM Builders & Decorators Ltd 16
- DD Construction (Builder) 17

BUILDERS MERCHANTS

- Chalk Down Lime 17

BUS SHELTER 10

CAR REPAIRS

- Bridge Garage Workshop 17
- LWA Bodyshop Ltd 17
- Tivoli Auto Services 17

CAR PARK 10, 14

CHAIRMAN'S INTRODUCTION 1

CHIROPODIST/PODIATRIST

- Andrea Birtwistle 17

CHURCHES

- Chapel Hill Church (URC) 21
- St John the Baptist Parish Church 23
- Friends of Parish Church Heritage Trust 24
- Parish Church Bellringers 24

CLEANING

- Conquest Cleaning Services Ltd 18

CLERK 9

COUNCILLORS 8-9

COMMUNITY FRIENDS SCHEME 34

COUNCIL TAX 11

COUNTY COUNCILLOR 3-4, 30

CRICKET 22

DANCE

- Old Time Dance Club 22

DECKING & FENCING

- John Grice 18

DISTRICT COUNCILLOR 4, 30

DOCTORS

- Dr S Stern & Partners 18

DOGS 28

DRAINAGE

- Ecoflo Garden Irrigation Ltd 18

DRAMA

- Sedlescombe Players 25

EAST SUSSEX COUNTY COUNCIL 30

EAST VIEW TERRACE 12

ELECTRICAL

- Altec Electrical Services 18

EMERGENCY PLAN inside back cover

FENCING

- D & B Fencing 19

FIRE HOME SAFETY & SMOKE ALARMS 28

FIREWORKS 28

FISHING 22

FLOWER CLUB 22

FOOTBALL 22

FOOTPATHS & BRIDLEWAYS 29

FRIENDSHIP CLUB 23

GARDENS

- Garden Society 23

GOLF RESORT

- Sedlescombe Golf Club 19

HAIR & BEAUTY

- The Clock House 19

HALL HIRE

- Chapel Hill Church 21
- Sedlescombe Village Hall 278

HAZARDS FOR SCHOOLCHILDREN 14

HOUSEBUILDING 12

HOUSING SUPPORT FOR OVER 65s 29

IVY COTTAGE 12

JOINERY

- J&R Joinery 19

LIBRARIES 29

LIFT SCHEME 29

LIONS CLUB - BATTLE & VILLAGES 30

LOCAL AUTHORITIES 30

LOCAL HISTORY 30

MANOR COTTAGES 13

MONEY SAVING 19

NEIGHBOURHOOD WATCH 23

NETBALL 23

INDEX

NEWS

- Sedlescombe News 31
- Noticeboard 31
- Village Voice 31
- Parish Council website 31

PARISH COUNCIL ANNUAL REPORT 12-15

PARISH COUNCIL MEETINGS 7

PARISH COUNCILLORS 7, 8-9

PESTALOZZI

- Estate 24
- International Village Trust 24
- Outreach 25
- Sedlescombe Youth Club 27
- Parish Council Report 14-15

PLAYGROUNDS

- Riverside 10, 31
- East View Kickabout Area 31
- East View 31

PLUMBING

- Richard Jordan Limited 19

POLICE

- Crimestoppers 32
- Police Community Support Officer 32
- Police & Crime Commissioner 34
- Victim Support 32

POTHOLES etc 32

PRECEPT 10

PUBLIC TOILETS & CAR PARK 14

PUBLIC TRANSPORT 32

RECLAIMED MATERIALS

- Rand Reclamation 20

RECYCLING 33

RED BARN FIELD NATURE PARK 30

ROTHER DISTRICT COUNCIL 29

ROTHER SENIORS 256

SCHOOL

- Sedlescombe CE Primary School 25-26
- ICT Suite 26
- Swimming Pool 26
- Minibus 26

SIGNWRITER & AUTHOR

- Mrs J Chapman 20

SHOPS

- Sedlescombe Antiques & Collectables 20

SHOP & POST OFFICE

- Sedlescombe Village Stores Ltd 20

SOCIETIES ASSOCIATION 26

SPORTS ASSOCIATION 26

SPORTSFIELD 10, 26

STREET FARM 13

SWIMMING POOL (see School)

TAXI

- Sedlescombe Hire Car 20

TENNIS 10, 15, 31

THURSDAY CLUB 27

UTILITIES 19

VILLAGE GREEN 33

VILLAGE HALL 27

WEBSITE 32

WINDOWS

- John Grice 20

WOMEN'S INSTITUTE

- Sedlescombe Green WI (evening) 27

YOUTH CLUB 27

Please send all Parish Council correspondence to Mrs P Raymond (Clerk/RFO), Sedlescombe Parish Council, Woodland Cottage, Chapel Hill, Sedlescombe, Battle TN33 0QX. 01424 870508. sedlescombe@freezone.co.uk.

SEDLSCOMBE EMERGENCY PLAN

During the past year, the Parish Council's Emergency Committee has met several times to update the Sedlescombe Emergency Plan. The local Emergency Plan provides a framework of contacts and activities which, in the event of an emergency, will be of benefit to the community, people in distress or at threat and responding agencies.

Residents may feel assured that the Police will take the lead role in managing an emergency. They will advise of any need for evacuation or other required actions in co-operation with local authorities. In addition, the District Council maintains an Emergency Plan which is constructed with the full co-operation of all of the emergency services and utilities and other organisations. There are separate plans for areas of specific risk.

Members of the Parish Council's Emergency Committee have agreed to be "Emergency Response Wardens". Their role is to:

- Identify the location and area, the nature of the incident and the number of people involved.
- Report to Sussex Police 999 system.
- Contact the village hall keyholder (870707) and/or reception at Pestalozzi (870444) as appropriate if temporary accommodation is required.
- Contact other wardens and agree to meet.
- Establish contact with Rother District Council.
- Link with first emergency response units arriving at the scene.
- Act as a local guide and information provider.

In the event of an emergency, please contact the councillor closest to the incident as follows:

Roy Chapman, Ashdown Cottage, Cottage Lane, Sedlescombe 870520

Jonathan Vine-Hall, Hurst House, Hurst Lane, Sedlescombe 07800 831629

Pat Martin, Copse Cottage, Hurst Lane, Sedlescombe 870353

John Reynolds, Brambles, Hurst Lane, Sedlescombe 870956

Jenny Mitchell, 16 East View Terrace, Sedlescombe 870707

Valerie Wright, Woodlands, New England Lane, Sedlescombe 870220

Thank you to those who responded to the Council's request for volunteers to help in the event of an emergency. Your details have been recorded. Anyone else with special skills which could be useful in an emergency is invited to contact the Clerk on 870508 or by e-mailing sedlescombe@freezone.co.uk.

SEDLESCOMBE PARISH COUNCIL

URGES YOU TO

REGISTER YOUR SUPPORT...

... FOR SEDLESCOMBE'S CASE FOR SUPERFAST BROADBAND AT

www.sedlescombe.org.uk

To this



from this



Please do this for your community. This is **not** just a simple case of faster broadband speeds. More details of the profound importance of this case can be found on the website. Dead easy to do... Does not commit.

Published by Sedlescombe Parish Council, Woodland Cottage, Chapel Hill, Sedlescombe

TN33 0QX. E-mail: sedlescombe@freezone.co.uk. March 2012.